

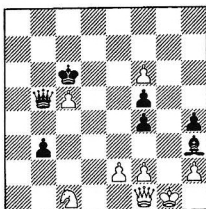
## More Works of Simkhovich (cont'd)

by Harrie Grondijs

The following two studies by Simkhovich remained unpublished until now. They are the two remaining more or less 'mature' studies from the billets that V. Rossomakho sent from Leningrad<sup>1</sup>. Both were probably never published because they show deficiencies although the first one (**SIM962**) can be corrected, without drastic alterations.

In a later issue of the STES JOURNAL we will take a close look at the remainder of the unpublished material (design notes).

### SIM962



Stipulation: WIN

GBR code: 4031.54

Rueb code: S76

Themes: caged queen, underpromotion, Zugzwang

First publication: STES Journal

A typical Simkhovich theme: an original motivation justifies underpromotion.

1. Nc1 x b3

Not 1. Qxh3? b2 2. Qf3† Kd7 3. Qd5† Kc7 4. Qd6† Kb7 etc. and Black even wins because the king escapes from perpetual check.

1. Qb5 x b3

If Black responds with 1. ... Bxf1 then 2. Nd4† Kxc5 3. Nxb5 seals Black's fate.

2. Qf1 x h3

Who needs queens?

2. Qb3 x h3

3. f2 - f3 Kc6 x c5

The queen is caged but how can it possibly be caught?

4. f6 - f7 Kc5 - d4

5. f7 - f8N

Remarkable! The underpromotion is motivated by the fact that it is the only piece that can visit the queen in its cage.

5. Kd4 - e3

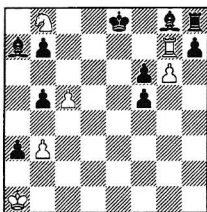
6. Ng8 - g6

Creating Zugzwang. Attempts to attain a draw by a queen's sacrifice 6. ... Qxh2† 7. Kxh2 or 6. ... Qg3† 7. hxg3 hxg3 8. Nh4 all fail.

However, 6. Ne6? would not win. E.g. after: 6. ... Qg4† 7. fxg4 fxg4 8. Kf1 h3 9. Ng5 g3 10. hxg3 h2 11. Kg2 fxg3 draws. WIN

Note: Simkhovich put the black queen on e6, allowing 1. ...Qg8† and wins.

### SIMC963



Stipulation: DRAW  
 GBR code: 461.36  
 Rueb code: E54  
 Themes: echo stalemates  
 First publication: Stes Journal

A typical Simkhovich study, comparable with SIM351. Alas, the original position is flawed, and surprisingly not all that easily mended. I hope my version is faithful enough to the original to speak of a correction.

1. Rg7 - e7†

Obviously, all of White's hopes are put on the promotion chances for the pawn on g6.

1. Ke8 x e7

2. g6 - g7 Ba7 x c5

Or first 2. ...Kf7 3. gxh8Q Bxc5 4. Nd7 etc.

3. g7 x h8Q Ke8 - f7

As in SIM351 the Queen finds itself locked up immediately after its origination.

4. Nb8 - d7 Bc5 - d4†

White threatened not just 5. Qxf6† but also 5. Ne5†. Now it seems Black is set to take the victory away.

5. Ka1 - a2

Not 5. Kb1? f4 6. Ka2 f3 7. Kxa3 f2 8. b4 Bb2† 9. Kxb2 f1Q and wins.

5. f5 - f4

Or 5. ...b4 6. Nb8 f4 7. Nc6 bxc6 8. Qg7† Kxg7 stalemate number one (else 8. Nd8†).

6. Ka2 x a3

Always going for stalemate, either:

A

6. f4 - f3

6. b3 - b4 f3 - f2

7. Nd7 - e5† Bd4 x e5

Or 7. ...fxe5 with the same result.

8. Qh8 - g7† Kf7 x g7

STALEMATE number two

or:

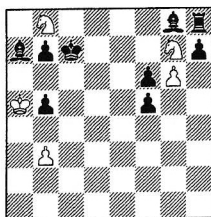
**B**

6. b5 - b4†  
 An attempt to actively thwart White's stalemate plan.  
 6. Ka3 - a2 f4 - f3  
 7. Nd7 - e5†  
 Not 8. Nf8?; if then 8. ...Kxf8 9. Qxh7† draws, but 8. ...f2 9. Nxh7 f1Q wins.  
 7. Bd4 x e5  
 Also here 7. ...fxe5 yields the same result.  
 8. Qh8 x h7† Bg8 xh7  
 STALEMATE number three.

The position noted on the billet is he following:

F.M. Simkhovich, draft,  
 =, 362.25

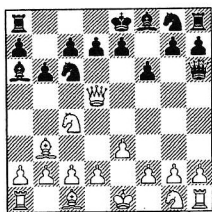
Intended solution:



1. Ne8† Kd8 2. g7 Kxe8 3. gxh8Q Kf7 4. Nd7 Bd4 5. Kb4 f4 6. Ka3 A] 6. ...f3 7. b4 f2 8. Ne5† and 9. Qg7† =, or 6. ...b4† 7. Ka2 f3 8. Qxh7 Bxh7 stalemate.  
 But 5. Kxb5 f4 6. Kc4 draws as well.

Mr. Johnson informs me, that when he was doing some research at the Royal Library in The Hague, his attention was drawn to the solution to **SIMP262** that you will find on page 215 of [THE REVISED EDITION OF] WORKS OF SIMKHOVICH:

**SIMP262**



1. Both sides have played seven moves, which? 2. Mate in 4. The mate in 4 starts with 1. Ne5 etc., but the first question I left unanswered (although I guessed about the interposition of two pieces). In the Fairy Chess Review T.R. Dawson explains: *'Black king and queen were transposed, easily giving the position in 7 moves with 0-0-0 illegal, so mate by 8. Ne5 Qxe3 9. d(f)xe3 and mate in 2. Curiously, the position can be reached in 7 with black queen and knight interposed, but then 0-0-0 remains playable* (T.R. Dawson in Fairy Chess Review).

(to be continued)