

More Works of Simkhovich

by Harrie Grondijs

Jakov Rossomakho, who lives in St. Petersburg and is a well-known composer of chess problems, kindly sent a number of notes, 'billets' measuring approximately 6 x 13 centimeters each, copied from the Simkhovich file, 114 in all, 30 of which with studies. Each of these billets shows a diagrammed position, sometimes two, often with scribbled annotations in what must be Froim Simkhovich's own handwriting: a solution, a comment, or a date. With a few exceptions all the billets carry the name of F. Simkhovich.

19 of the billets capture studies, which are included in my book (REWOS²): SIM221, SIM223, SIM231 (twice), SIM232, SIM233, SIM252, SIM254, SIM261, SIM262, SIM263, SIM266, SIM267, SIM268, SIM271, SIM272, SIM273, SIM281, SIM351.

The other 11 billets are concerned with hitherto unknown studies that were either published in obscure periodicals, refusals, or design notes (ideas and analytical diagrams). None of these positions were known to me before. The material can be ordered as follows:

- three billets with two diagrams each, showing similarities with SIM383 (without comments or solution, most probably preliminary sketches).
- five billets with mature studies, two of which have probably been published, two have probably been sent off to 64 but were never published, a fifth one is dated 2 May 1936, but it seems unlikely that it was ever published.
- One billet has only the indication "win" next to the diagram and remained unsigned.
- Two billets with study sketches (one of them signed).

As the billets do not include any mature studies dated later than 1936, I assume that these billets hold those study compositions that Simkhovich remembered off-hand when he again expanded his composing activities in 1936. As he had been away from the scene for a period of five years, the "64" editors will have been rather critical (only one study was published per bi-weekly issue) and have rejected the three studies that were sent to them as unsound, without much further deliberation.

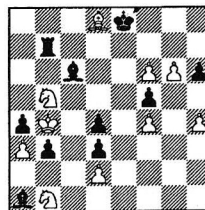
In three mature studies which remained unpublished to this date, I found some minor bugs which could very easily be corrected. Luckily, as is so often the case in endgame studies, the flaws are right at the beginning of the solutions. I have kept the corrections as simple and as straight-forward as I possibly could.

As it is not uncommon for enthusiastic editors that they provide composers with support in the form of analytical comments and suggestions, I hope that the diagrammed positions, if correct (!), are accepted and admired as the genuine Works of Simkhovich which they are.

Regrettably, the material arrived too late for [THE REVISED EDITION OF] WORKS OF SIMKHOVICH. However, I'll present these new Works in the style of the book, starting with the first three in this issue. The other two will appear in STES JOURNAL 2,2.

In a later issue of the STES JOURNAL we will take a close look at the remainder of the unpublished material.

SIM352



Stipulation: DRAW

GBR code: 372.66

Rueb code: E29

Themes: echo, systematic movements, perpetual chase

First publication: Trud (Tourney VTsSPE)

A Type C study. Simkhovich sets out to construct the two echoing mechanisms without paying heed to the changing fashion of the decade.

1. f6 - f7† Ke8 - f8

2. Bd8 - b6

A poisonous move; the threat is 3. Bc5†.

2. Rb7 x b6

3. Kb4 - c5

The stage is set, - the patterns can be drawn.

A 3. Rb6 x b5†

4. Kc5 x c6 Rb5 - a5

5. Kc6 - b6 Ra5 - a8

6. Kb6 - b7 Ra8 - d8

7. Kb7 - c7 Rd8 - d5

8. Kc7 - c6 Rd5 - a5

POSITIONAL DRAW

The king will forever draw its square inside the rook's square. Or:

B 3. Rb6 - a6

4. Nb5 - c7 Bc6 - b7

5. Nc7 x a6 Bb7 x a6

6. Kc5 - b6 Ba6 - c4

7. Kb6 - c5 Bc4 - e6

8. Kc5 - d6 Be6 - c8

9. Kd6 - c7 Bc8 - a6

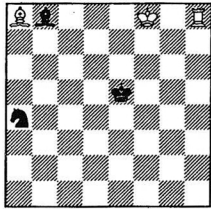
POSITIONAL DRAW

And now (flexible response), the king will be drawing lozenges inside the bishop's lozenge.

According to the classification of Kasparian this study belongs to the category of Perpetual Siege. Rueb regards this type of movement as positional draw through binding (see RUEB V, page 38). In Simkho's own scheme this study because of the physical engagement of either bishop or rook belongs to the group showing Blockades.

A model achievement when seen as a Study-as-Problem. Purists will point at the awkwardly placed bishop and knight that must keep a check on each other.

SIM269

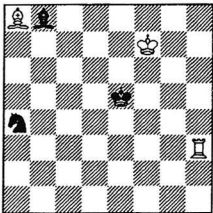


Stipulation: WIN
 GBR code: 143.00
 Rueb code: E38-40
 Themes: self-block, mate
 First publication: Trud

1. Kf8 - f7 Bb8 - c7
 If 1. ... Ba7 2. Rh5† Kd6 3. Ra5 +-.
 2. Rh8 - h5† Ke5 - d6
 3. Rh5 - d5
 MATE

No solution is given on the billet, just the publication data. This study obviously is a correction of a study by 'F. Simkhovich' published in the Basler Nachrichten in June 1924. Lamare noted a dual solution³. Apparently the study was composed on the occasion of a thematic tourney. In my version of the DB I found 5 studies with this material by Rinck and 3 by Prokop published in the Basler Nachrichten in 1924.

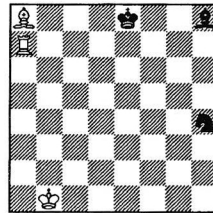
V269



F.M. Simkhovich
 1924
 Basler Nachrichten
 WIN
 143.00

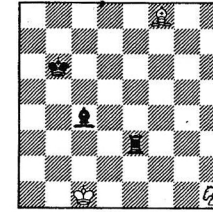
Solution **SIMV269**: 1. Rh8 etc.;
 dual: 1. Rh5† Kd6 2. Rb5 Kc7 (2. ... Bc7 3. Rd5 #) 3. Ke7 Kc8 4. Bb7† Kc7 5. Ba6 Nc3 (if 5. ... Nc5 6. Rxc5† Kb6 7. Rb5† -+) 6. Rb7† Kc8 7. Rb3† wins.
 Solution **269a**: 1. Bc6† Kf8 2. Ra8† Kg7 3. Be4 wins (Zugzwang).
 Admirable is the way the pieces are waiting outside the ring before the match.

269a



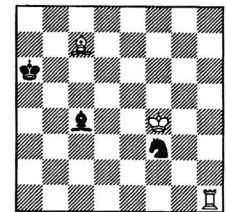
H. Rinck
 1924
 1st Hon. Mention
 Basler Nachrichten
 WIN
 143.00

269b



H. Rinck
 1924
 1st Prize
 Basler Nachrichten
 DRAW
 341.00

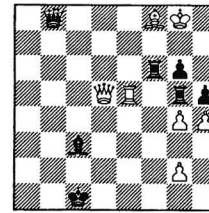
269c



F. Prokop
 1924
 3rd Prize
 Basler Nachrichten
 WIN
 143.00

Solution **269b**: 1. Nf2 Re1† 2. Kd2 Re2† 3. Kc3 Rxf2 4. Bc5† Kxc5 stalemate. A nice counter-piece to the Simkhovich mate study!
 Solution **269c**: 1. Rc1 Bd5 2. Rc5 Nd4 3. Ke5 Ne6 4. Ra5† Kb7 5. Bd6 (look at that!) 5. ... Bc4 6. Ra4 Bb5 7. Rb4 +-.

SIM961



Stipulation: DRAW
 GBR code: 4740.32
 Rueb code: S13
 Themes: trapped queen, superior bishop, Seeberger theme, echo pinning
 First publication: STES Journal

'Motivation twisted'. Another pre-conceived idea: the best a white queen can do is remove itself from the board as quickly as possible, making way for the noble bishop that wants to divert the black queen.

1. Re5 - e1† Bc3 x e1
 2. Qd5 x g5† Rf6 - f4
 2. ... Qf4? 3. Bh6 draws at once: 3. ... Qxg5 4. Bxg5† and 5. Bxf6 =.
3. Qg5 x f4† Qb8 x f4
 4. Bf8 - h6 Qf4 x h6

The pin is forcefully cancelled and immediately replaced by a sacrificial magnet line-pin by the bishop. Now White is a bishop and a queen down.

5. g4 - g5 Qh6 x g5

5. ... **Qf8+** 6. Kxf8 Bxh4 7. Kg7 Bxg5 8. Kxg6 =. The bishop is so close to the king that it wins the necessary time.

6. h4 x g5 Kc1 - d2

Or 6. ... **Bd2** 7. Kf7 Bxg5 8. Kxg6 =.

7. Kg8 - f7 h5 - h4

8. Kf7 x g6 Kd2 - e3

9. Kg6 - h5 Ke3 - f4

10. g5 - g6

DRAW

This study bears the inscription: to 64 29/V/36. I added the black rook on g5. Without it there is a dual draw after 1. Re1+ Bxc1 2. Qc4+ and a perpetual chase of the king or the rook on f6 is lost.

The composition would make a good entry for the Ponziani Tourney organized by E. Paoli and Alain Pallier ('White is bereaved of his pieces but the remaining pawns still manage a draw'). (*to be continued*)